



Technical Specifications

Assima STT Trainer 6.2

Author	Assima Technical Documentation
Date	27 November 2013
Version	6.2
Revision Number	6.2.1
Audience	All
Overview	This document specifies the minimum and recommended system requirements to install and use Assima STT Trainer 6.2.

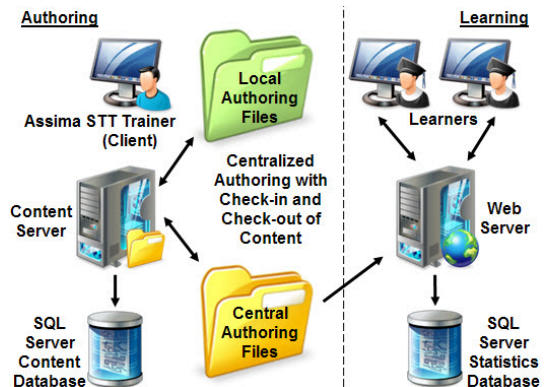
Overview

Assima STT Trainer is a client-server application. Content authors log on to the Assima STT Trainer Content Manager from their desktops to access a central authoring repository (CAR) where lesson resources and content are stored, edited and deployed to trainees. Trainees typically access the lessons over the company intranet (or the internet) with Internet Explorer, Google Chrome, Firefox or Safari.

The Assima STT Trainer Server is installed on the computer that hosts the central authoring location in the organization. All client computers that are used for authoring must be pointed to this location when you roll out the clients. The server can be installed as a web server using the HTTP protocol, or as a Windows service, using the TCP/IP protocol.

To support diverse authoring projects, you can host multiple servers and authoring projects on the same computer.

[The minimum & recommended requirements for Assima STT Trainer Server](#)



Component	Minimum Requirements	Recommended
File System	NTFS only	
Operating System *	Windows Server 2003 SP2	Latest Windows Server
Processor	Dual-Core 2 GHz	Quad-Core 3 GHz or more
Memory	2 GB	4 GB or more
Dedicated Disk Space **	4 GB	10 GB or more
Web Server	Internet Information Server 6.0	Latest
Protocols and Ports	HTTP - Port 80 or own port TCP/IP - Port 9900 or own port See the section on <i>Assima STT Trainer Port Requirements</i> ⁷	
Database	Microsoft SQL Server Express§ Microsoft SQL Server 2005	Latest§§
Windows Installer	Windows Installer 4.5	Latest
.NET Framework	Microsoft .NET Framework 3.5 SP1	

*Windows XP Professional, Windows Vista, Windows 7 and Windows 8 are sufficient for evaluation and standalone installations only. However, a full deployment of the server is only supported on server operating systems.

**Required for a repository of approximately 100 lessons of 30 MB each. Multiple instances of the Assima STT Trainer Server on large projects will require additional capacity.

§Recommended for standalone installations only.

§§For Microsoft SQL 2008 Management Studio you will need to have PowerShell installed.

Content Development

Authors require the Assima STT Trainer Content Manager. This includes all the tools to record (the Recorder), edit (the Editor), structure and distribute training material.

With the Recorder, authors can record application screens and tasks (such as keystrokes and mouse clicks) as they work in live applications. In the Editor, authors can further customize and enhance lessons based on the recorded data.

The size of a lesson file depends on the number of screens and voice recordings as well as the amount of lesson information and other content it contains. An average lesson is about 30 MB - which includes the original recorded data, edited data and all published outputs. The recommended hard disk space below will therefore be sufficient for an authoring repository of about 100 lessons. However, if you intend to create more (or larger) lessons, you should adjust the minimum hard disk space accordingly.

The minimum & recommended requirements for Assima STT Trainer Content Manager

Component	Minimum Requirements	Recommended
File System	NTFS only	
Operating System	Windows XP Professional SP3*	Latest
Processor	Dual-Core 1 GHz	Dual-Core 3 GHz or more
Memory	1 GB	4 GB or more
Dedicated Disk Space**	2 GB	4 GB or more
Display Adaptor	1024x768, 24-bit color, 16 MB memory	1024x768, 24-bit color, 64 MB memory or more
Windows Installer	Windows Installer 4.5	Latest
.NET Framework	Microsoft .NET Framework 3.5 SP1	
Interop Assemblies	Microsoft Primary Interoperability Assemblies 2005	
Database***	Microsoft SQL Server Compact 3.5 SP2	
SAP§	SAP Server 4.7 <i>with SAP Scripting</i> SAP GUI 6.4 (patch 23 or later) <i>with SAP Scripting</i>	Latest
Java Access Bridge§§	Java Access Bridge 2.0	Latest
Microsoft Office	Microsoft Office 2003 with Compatibility Pack	Latest

<u>Cross-browser Lesson Player</u>		
Browser	Internet Explorer 7.x Google Chrome 9.x Mozilla Firefox 3.6	Internet Explorer 8.x Google Chrome 17.x
Audio Decoder §§§	Windows Media Player 9	Latest
<u>Legacy Lesson Player</u>		
Browser	Internet Explorer 6.x SP2	Internet Explorer 7.x or 8.x
Audio Decoder	Windows Media Player 6.4	Windows Media Player 9 or later

*Windows XP Professional is only supported on 32-bit computers.

**Required for a repository of approximately 100 lessons of 30 MB each. Authors working on multiple projects on different servers may require additional capacity.

***Required for storing control information for the Image Reader.

§Only required if you intend to record SAP.

§§Only required if you intend to record Java applications with the Java Reader.

§§§Only required if your lessons contain voice recordings and the operating system does not already have a built-in audio decoder.

Content Deployment and Statistics

Once you have developed and published your content, you can deploy the material as SCORM packages, or deploy your content to the Assima STT Trainer Lesson Portal. If you use training repositories, you can install the Statistics Writer on your web server to save learner statistics.

The required hard disk space for the training repository is determined by the size of the deployed content, i.e. the number and size of the deployed lessons, resources and additional files. An average deployed lesson is about 10 MB – which includes the simulation and all published outputs. The minimum hard disk space overleaf will therefore be sufficient for a training repository of about 400 lessons. However, if you plan to deploy large training repositories with a lot of content and extra files, you should adjust the hard disk space accordingly.

The minimum & recommended requirements for the web server and statistics (training repository)

Component	Minimum Requirements	Recommended
Operating System *	Windows 2003 Server SP2	Latest Windows Server
Processor	Dual-Core 2 GHz	Quad-Core 3 GHz or more
Memory	2 GB	4 GB or more
Dedicated Disk Space **	4 GB	10 GB or more
Web Server	Internet Information Server 6.0	Latest
Protocols and Ports	See the section on <i>Assima STT Trainer Port Requirements</i> 7	
Database ***	Microsoft SQL Server Express§ Microsoft SQL Server 2005	Latest§§
Windows Installer	Windows Installer 4.5	Latest
.NET Framework	Microsoft .NET Framework 3.5 SP1	

*Windows XP Professional, Windows Vista, Windows 7 and Windows 8 are sufficient for evaluation and standalone installations only. However, a full deployment of the server is only supported on server operating systems.

**Required for a repository of approximately 400 deployed lessons of 10 MB each. Projects with large numbers of learners may require additional capacity on the server.

***You can install the statistics database on a different database server.

§Recommended for standalone installations only.

§§For MS SQL 2008 Management Studio you will need to have PowerShell installed.

Learner Environment

Depending on their operating systems, learners can access simulations and published documentation through internet browsers, depending on the version of the Lesson Player you are using:

- For the Cross-browser Lesson Player, learners can use Internet Explorer, Mozilla Firefox, Google Chrome or Apple Safari. They can also run content from mobile devices, such as an iPad, with limited support.
- For the Legacy Lesson Player, learners can use Internet Explorer to run content.

However, to access context-sensitive assistance directly from your applications, Assima STT Trainer Help has to be installed on learners' desktops. This application has additional minimum requirements.

[The minimum & recommended requirements for learners playing simulations in the Lesson Portal or a SCORM LMS with the cross-browser Lesson Player](#)

Component	Minimum Requirements	Recommended
Operating System	Windows XP Pro SP3 Mac OS X SUSE Linux Enterprise Desktop	Latest
Processor	Dual-Core 1 GHz	Dual-Core 3 GHz or more
Memory	500 MB	2 GB or more
Dedicated Disk Space	500 MB	2 GB or more
Display Adaptor	1024x768, 16-bit color, 8 MB memory	1024x768, 24-bit color, 32 MB memory or more
Browser	Internet Explorer 7.x Google Chrome 9.x Mozilla Firefox 3.6 Apple Safari 5.0	Internet Explorer 8.x Google Chrome 17.x
Audio Decoder*	Any MP3 decoder	Fraunhofer MPEG Layer-3 Audio Decoder or LAME

*Only required if your lessons contain voice recordings and the operating system does not already have a built-in audio decoder.

The minimum & recommended requirements for learners playing simulations in the Lesson Portal or a SCORM LMS with the legacy Lesson Player

Component	Minimum Requirements	Recommended
Operating System	Windows 2000 Pro SP4 Windows XP Pro SP3 Windows Vista SP1	Latest
Processor	Pentium IV 1 GHz or more	Dual-Core 3 GHz or more
Memory	500 MB	2 GB or more
Dedicated Disk Space	500 MB	2 GB or more
Display Adapter	800x600, 16-bit color, 8 MB memory	1024x768, 24-bit color, 32 MB memory or more
Browser*	Internet Explorer 6.x SP2	Internet Explorer 7.x or 8.x
Audio and Video Decoder	Windows Media Player 6.4	Windows Media Player 9 or later
Adobe Flash Player**	Flash Player 8.0 or 9.0	Flash Player 10.0

*The Legacy Lesson Portal and Legacy Lesson Player can be used with Internet Explorer only.

**Recommended to accelerate content download. Learners can still play simulations without Flash.

Flash 8 is not supported in Internet Explorer 6 on Windows 2000.

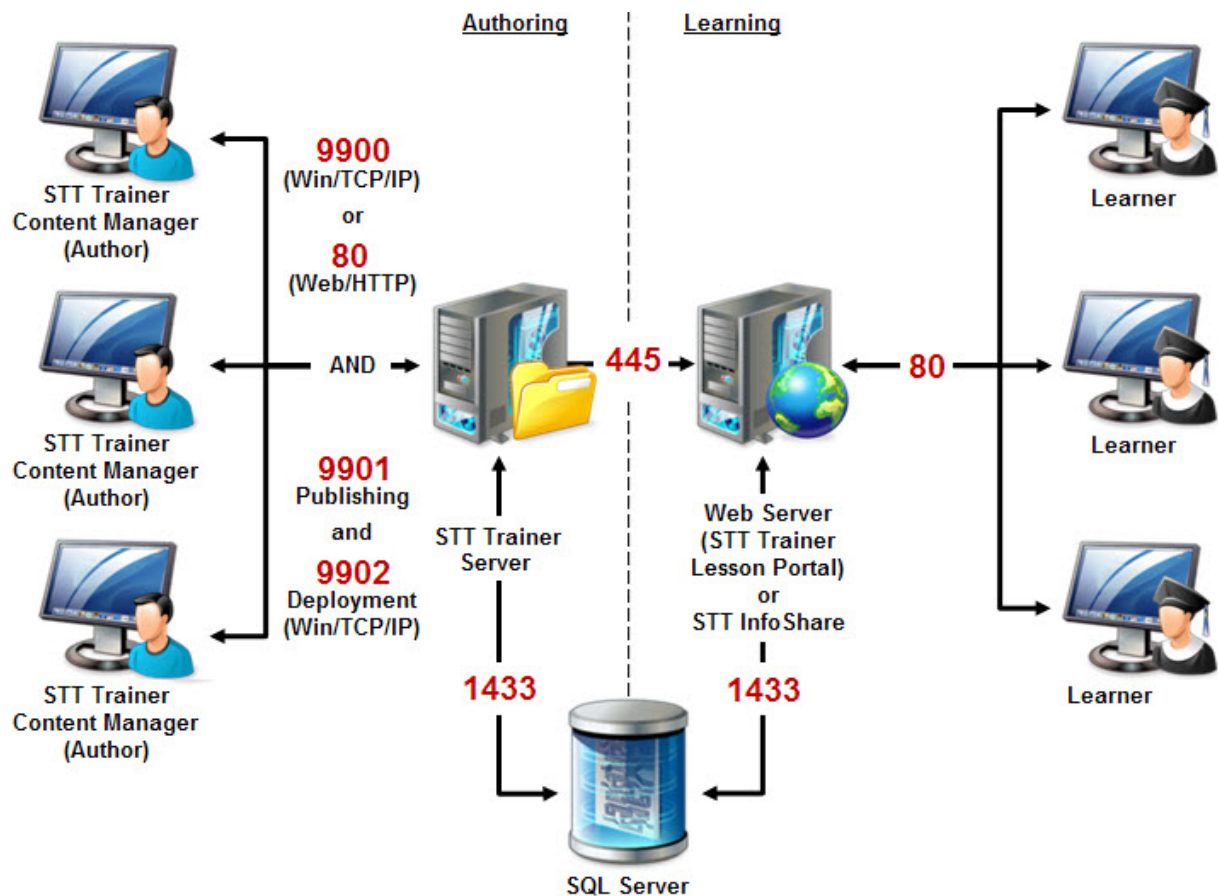
The minimum & recommended requirements for learners to install Assima STT Trainer Help

Component	Minimum Requirements	Recommended
Operating System	Windows XP Pro SP3	Latest
Processor	Dual-Core 1 GHz	Dual-Core 3 GHz or more
Memory	500 MB	2 GB or more
Dedicated Disk Space	500 MB	2 GB or more
Display Adaptor	1024x768, 16-bit color, 8 MB memory	1024x768, 24-bit color, 32 MB memory or more
Windows Installer	Windows Installer 4.5	Latest
.NET Framework	Microsoft .NET Framework 3.5 SP1	
Browser	Internet Explorer 7.x	Internet Explorer 8.x

Assima STT Trainer Port Requirements

Below is a graphic representation of the required port settings for the Assima STT Trainer Server (Authoring Environment) and the web server (Learning Environment).

All default ports can be set up to your environment, except for port *445* which is the dedicated Microsoft Networking port and cannot be changed.



General Notes

Standalone Installations

If you are running a standalone installation, you need to ensure that you comply with the memory requirements for both Assima STT Trainer Server and Assima STT Trainer Content Manager combined.

In other words, you need a minimum of 2 GB memory for Assima STT Trainer Server as well as 1 GB memory for Assima STT Trainer Content Manager; altogether a minimum of 3 GB to run a standalone installation.

The Recorder

- Currently, Java recording in 64-bit environments is not supported.
- If you use dual monitors with the Recorder, you can only record on the primary monitor.

Simulations and File Size

When learners access content through the Assima STT Trainer Lesson Portal, or play simulations and previews from a SCORM LMS, there are some additional files that are downloaded before the learner plays lessons. These files contain all the images for the Lesson Portal and Lesson Player, as well as the actual intelligence required to run the lessons in the browser.

Citrix Compatibility

Citrix Meta Frame is supported in both the Assima STT Trainer lesson development and lesson presentation environments. The following requirements apply:

- All Assima STT Trainer lesson development functionality is supported within the Citrix environment. Performance or latency issues resulting from low bandwidth or load on the Citrix server are not supported by Assima. Performance depends on the bandwidth available to the Citrix client. Independent tests have shown that a minimum of 64 KB/second is required, with the best performance achieved at 128 KB/second or above.
- Assima does not guarantee 100% recording accuracy in the screen recording process on any applications. It is generally accepted that editing may be required in the lesson editing phase to correct recording deficiencies.

However, from Assima STT Trainer 5.2.130 and 6.0.1254 you can use the Image Reader to learn controls for the Recorder to improve recording accuracy. This should reduce additional editing significantly.

For lesson recording, best results are achieved when the Assima STT Trainer Content Manager application, which includes the Recorder, is installed on the Citrix server. If the Recorder is installed on the Citrix client, screen recording accuracy may deteriorate due to the additional application layer between the Citrix client and server unless you use the Image Reader to identify and record controls correctly.

- Playing simulations is fully supported in the lesson presentation environment.



Assima (Euronext ALSIM), a fast-growing international software company, develops and commercialises software infrastructure solutions for Global Fortune 500 companies helping them improve their agility by accelerating global deployment and increasing adoption of large and strategic information systems.

Assima PLC
CityPoint, 1 Ropemaker St
London EC2Y 9HT
United Kingdom
+44 (0)20 3328 3280

Assima UK
+44 (0)20 3328 3280

Assima France
+33 (0)1 47 30 71 30

IMS Assima Denmark
+45 (0)5128 0000

Assima Spain
+34 91 572 6589

Assima US
+1 877 927 7462

Assima Germany
+49 (0)211 52391 185

OlasIT Ireland
+353 (0)1 2790 020

Assima SA
+27 21 526 4650

www.assima.net

Assima Canada
+1 514 282 6678

Assima Switzerland
+41 (0)21 612 03 79

Assima Italy
+39 (0)2 582 15 415